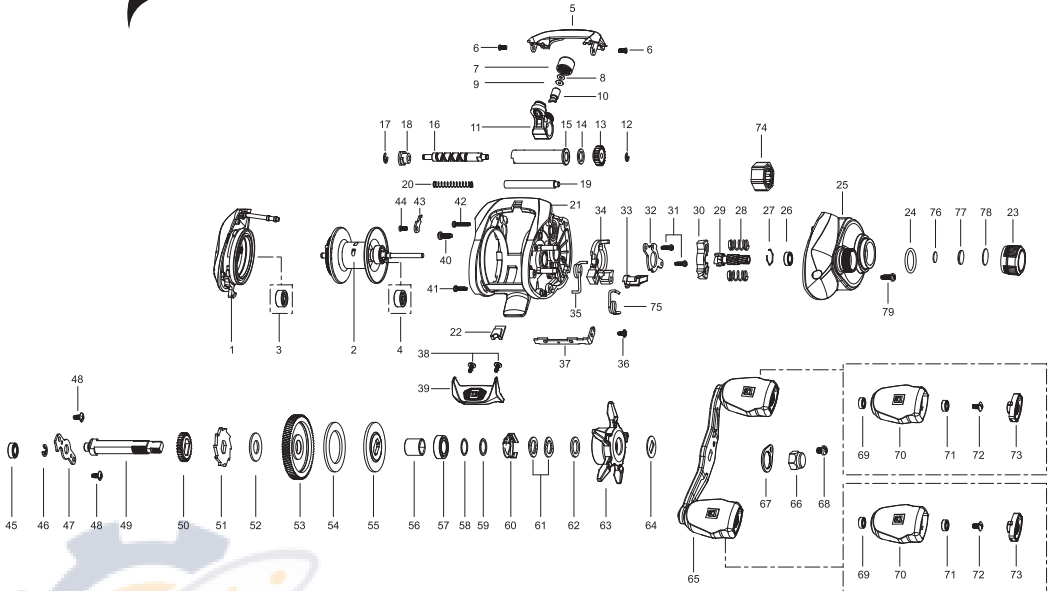




MODUS SZ2 7.3:1 RH



Key No.	Part No.	Part Name	Key No.	Part No.	Part Name
1	6KZ69609	PALM SIDE COVER UNIT	41	6K053410	TAP SCREW
2	5K542815	SPOOL ASSEMBLY	42	6K053405	TAP SCREW
3	6K392801	BEARING (CZB)	43	5K314601	PLATE
4	5K392701	BEARING (CZB)	44	6K797205	SCREW
5	5K541805	FRONT SUPPORT	45	6K170602	BALL BEARING
6	5K047701	TAP SCREW	46	63201402	RETAINER
7	6K977119	NUT	47	5K134901	BEARING PLATE
8	6K148801	WASHER	48	6K398603	SCREW
9	6K148804	WASHER	49	5K320803	GEAR METAL
10	6K256501	LEVEL WIND PIN	50	6K258101	GEAR
11	5K315502	LEVEL WIND ASSEMBLY	51	6K893601	RATCHET
12	6B339801	RETAINER	52	6K174507	WASHER
13	6K469301	WORM PINION	53	5K131403	DRIVE GEAR
14	6E096503	WASHER	54	5K039901	WASHER
15	6K456403	PIPE	55	5K040001	WASHER
16	5K095601	WORM SHAFT	56	6K859203	BUSH
17	6B339801	RETAINER	57	6K582202	BALL BEARING
18	6K456801	BUSH	58	6K177301	WASHER
19	5K314401	PILLAR POST	59	6K177302	WASHER
20	5K314501	COIL SPRING	60	6K259201	LEAF SPRING ASSEMBLY
21	5K541403	FRAME	61	5K027201	SPRING WASHER
22	5K542101	HOOK KEEPER	62	6K193601	WASHER
23	5K543205	TENSION KNOB	63	5K542201	STAR DRAG
24	6K904901	O-RING	64	5K232001	WASHER
25	5K626608	GEAR SIDE COVER ASSEMBLY	65	5K252732	HANDLE ASSEMBLY
26	6K304002	BALL BEARING	66	TS6-19	HANDLE NUT
27	6K170701	RING	67	TS7-19-X	HANDLE NUT LUCK
28	5K382101	COIL SPRING	68	63520467	SCREW
29	5K131101	PINION	69	5K440801	BUSH
30	5K093701	CLUTCH	70	TS9-MODTP	HANDLE KNOB (SET OF 2 INCLUDES CAPS)
31	5K047001	TAP SCREW	71	6K626402	BALL BEARING
32	5K251502	CAM PLATE	72	63511816	SCREW
33	5K250501	KICK LEVER	73	5K569601	HANDLE KNOB CAP (SET OF 2)
34	5K251301	CLUTCH CAM	74	5K242801	O/WAY CLUTCH ASSEMBLY
35	5K093401	SPRING	75	5K086701	SPRING
36	5K047001	TAP SCREW	76	6K164605	WASHER
37	5K320501	CLUTCH LINK	77	6K176905	COLLAR
38	6K963104	TAP SCREW	78	6K177001	WASHER
39	5K542003	THUMB BAR	79	63511014	SCREW
40	6K062706	TAP SCREW			